

SHENYUN

SILICONE FOLEY BALLOON CATHETER





PRODUCT TRADING

SILICONE FOLEY BALLOON CATHETER

A urinary catheter is a tubular device used for medical purposes, primarily to drain urine from the bladder.

Since it can remain in the bladder for a period of time, it is also called an indwelling urinary catheter. It is secured with a balloon at the end to prevent the catheter from being removed from the bladder. Urine drains through the catheter into a bag, which is emptied when full. The process of inserting a urinary catheter is called catheterization.

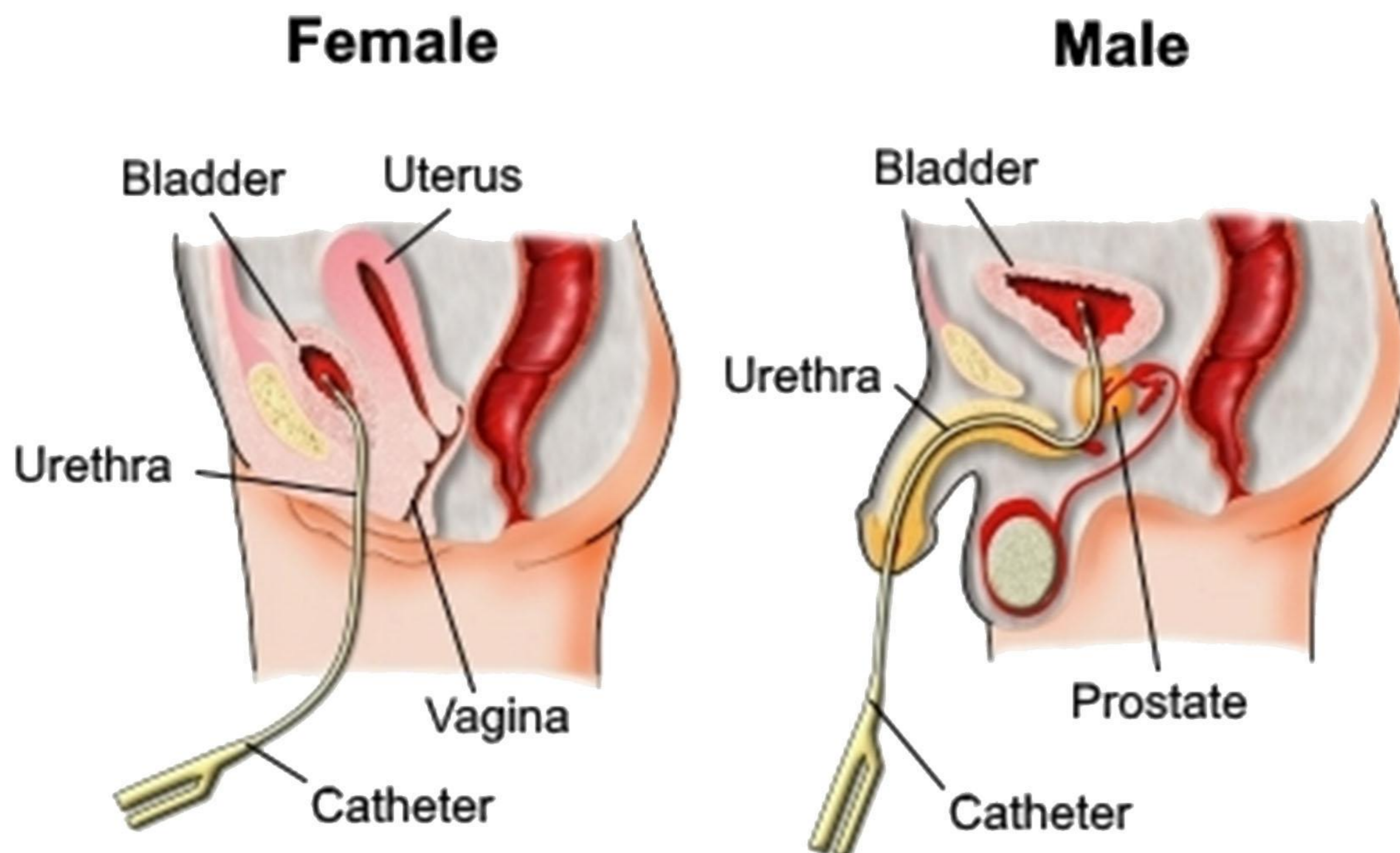
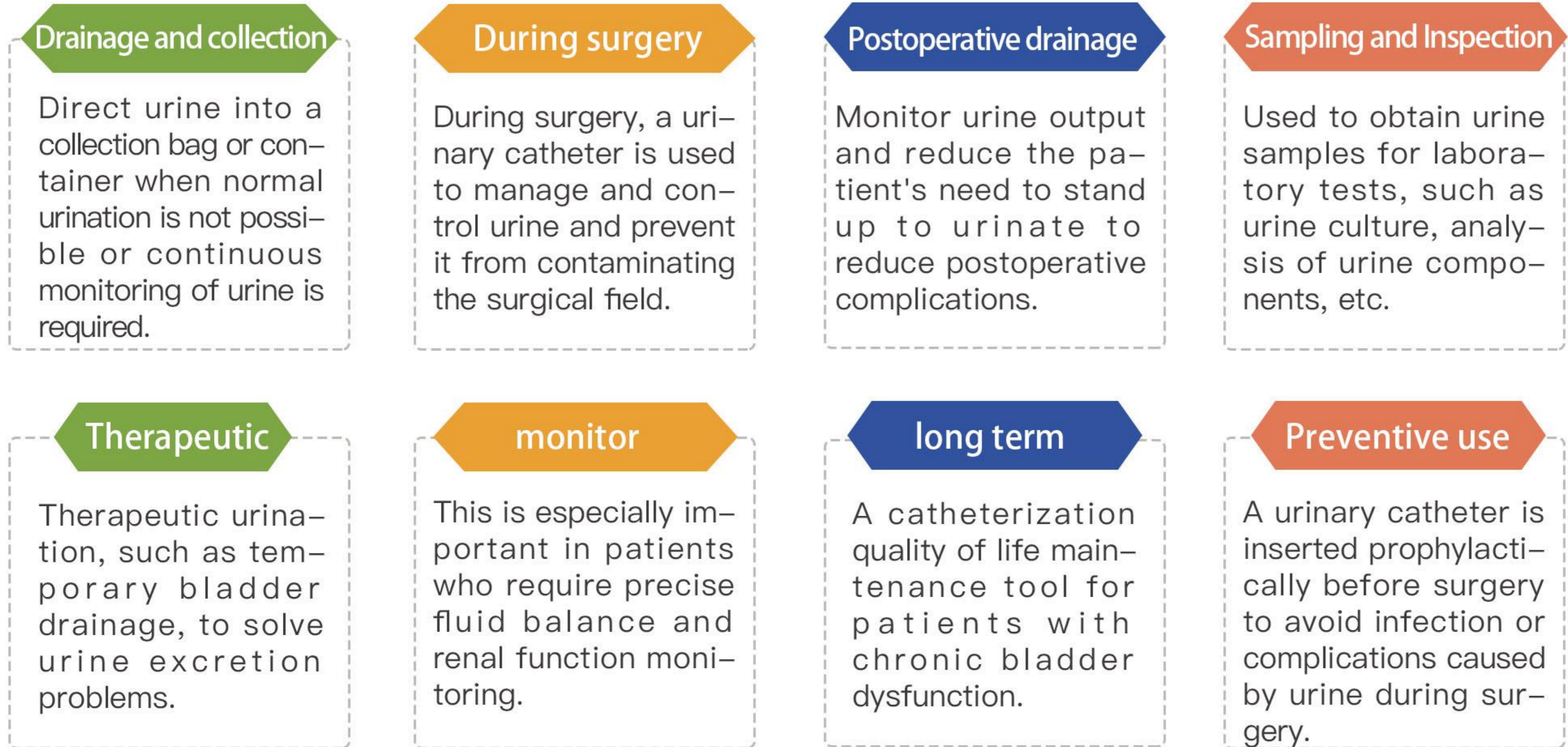
■ Features

- Medical grade silicone, excellent biocompatibility, long-term use.
- Transparent medical grade silicone tube allows for easy visual inspection and fluid viewing.
- X-ray opaque line confirms cannulation, allowing the tube to fit well into the bladder.
- Smooth round shaft minimizes trauma during insertion and removal.
- Color coded connectors, sterile double packaging.

■ Precautions

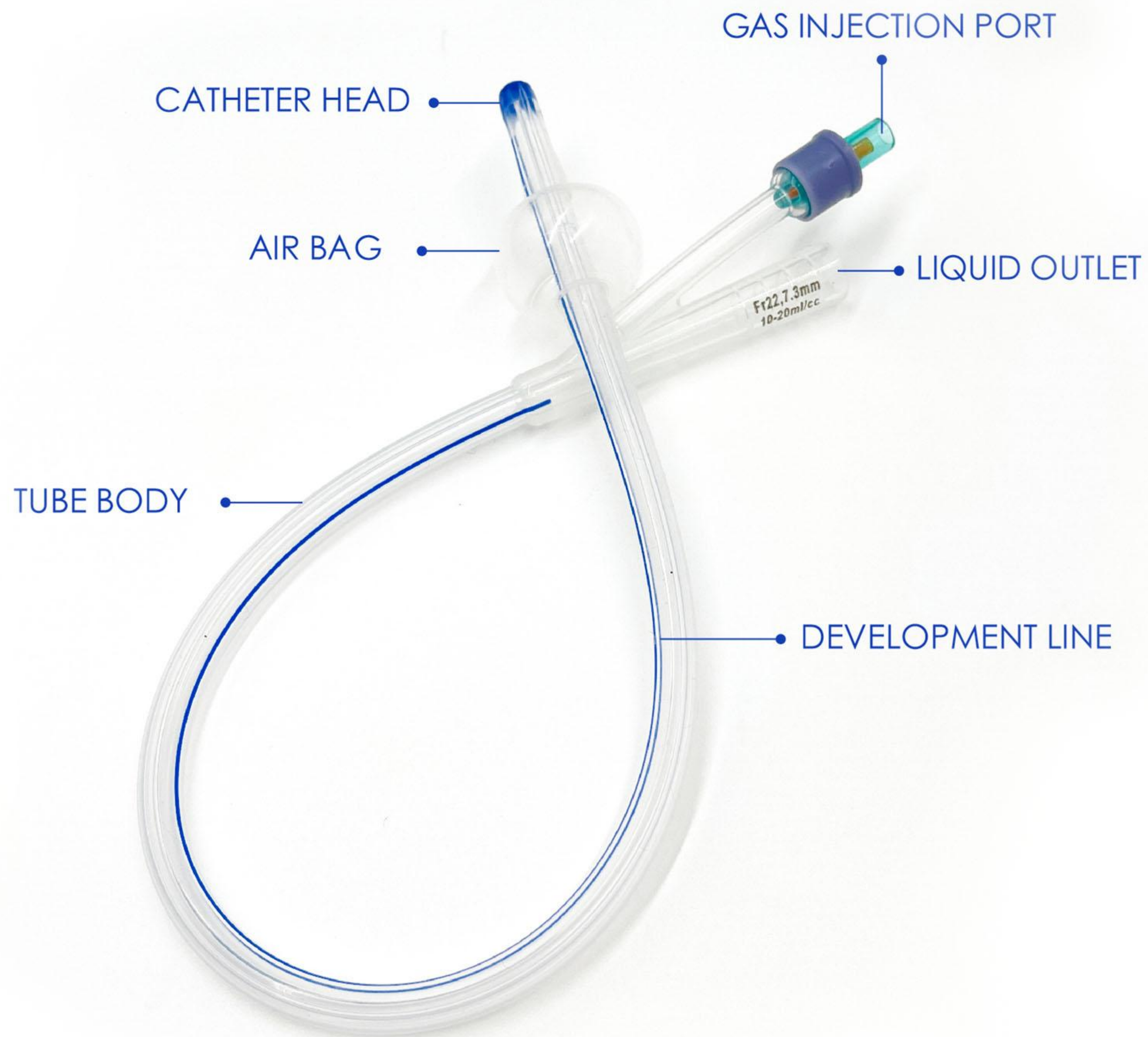
- Keep your hands and instruments sterile before and after inserting the catheter
- Choose the appropriate type of catheter according to the patient's condition.
- Be gentle when inserting the catheter to avoid damaging the urethra.
- Long-term catheters should be replaced regularly, usually every 1–2 weeks.
- Monitor the patient's urine volume and characteristics regularly.

■ CLINICAL APPLICATION AND EFFECT



■ **Silicone 2 way Foley balloon Catheter**

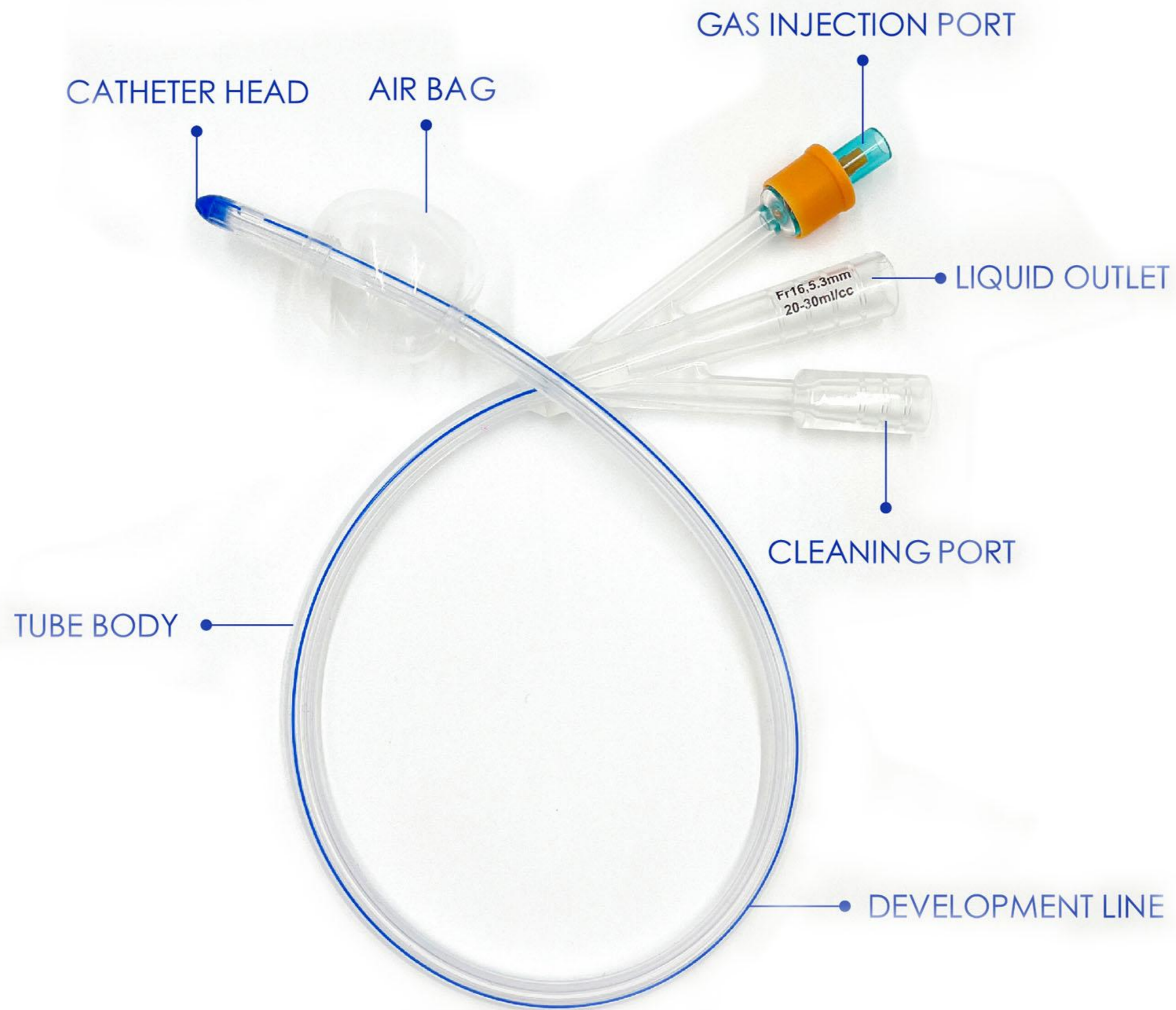
Double lumen catheters have two channels, one for urine drainage and the other for inflating the balloon to secure the catheter in the bladder.



MODEL	SIZE/mm	ERROR/mm	BALLOON VOLUMEml/cc	COLOR
SY07-01	3.3mm(10Fr)	±0.33	3	BLACK
SY07-02	4.0mm(12Fr)	±0.33	5-10	WHITE
SY07-03	4.7mm(14Fr)	±0.33	5-10	GREEN
SY07-04	5.3mm(16Fr)	±0.33	5-10	ORANGE
SY07-05	6.0mm(18Fr)	±0.33	5-10	RED
SY07-06	6.7mm(20Fr)	±0.33	5-10	YELLOW
SY07-07	7.3mm(22Fr)	±0.33	10-20	PURPLE
SY07-08	8.0mm(24Fr)	±0.33	10-20	BLUE

■ Silicone 3 way Foley balloon Catheter

A triple-lumen catheter adds a channel to the double-lumen catheter, which is usually used for bladder irrigation and drug infusion.



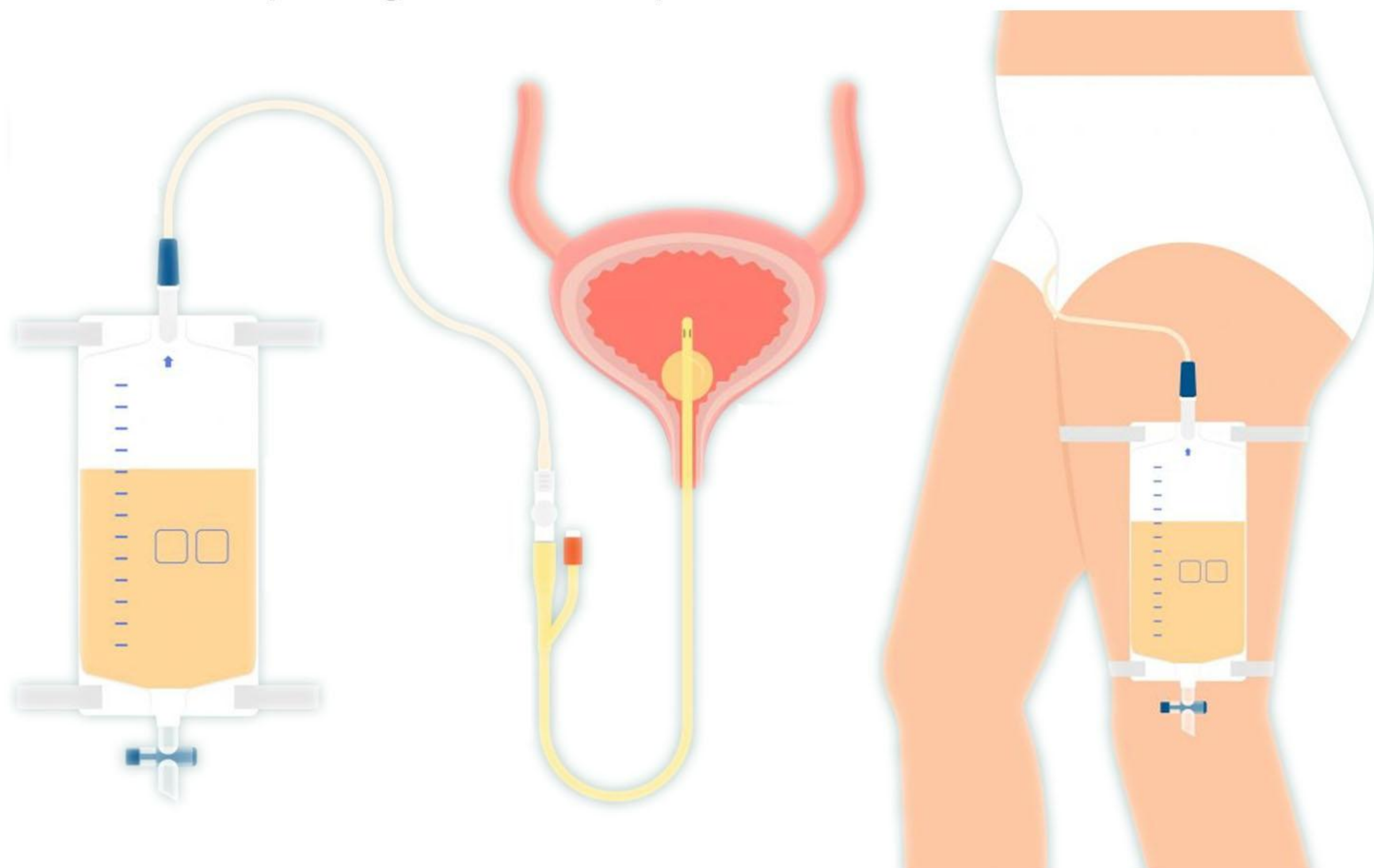
MODEL	SIZE/mm	ERROR/mm	BALLOON VOLUMEml/cc	COLOR
SY07-09	5.3mm(16Fr)	±0.33	20-30	ORANGE
SY07-10	6.0mm(18Fr)	±0.33	20-30	RED
SY07-11	6.7mm(20Fr)	±0.33	20-30	YELLOW
SY07-12	7.3mm(22Fr)	±0.33	20-30	PURPLE
SY07-13	8.0mm(24Fr)	±0.33	20-30	BLUE

RAW MATERIALS

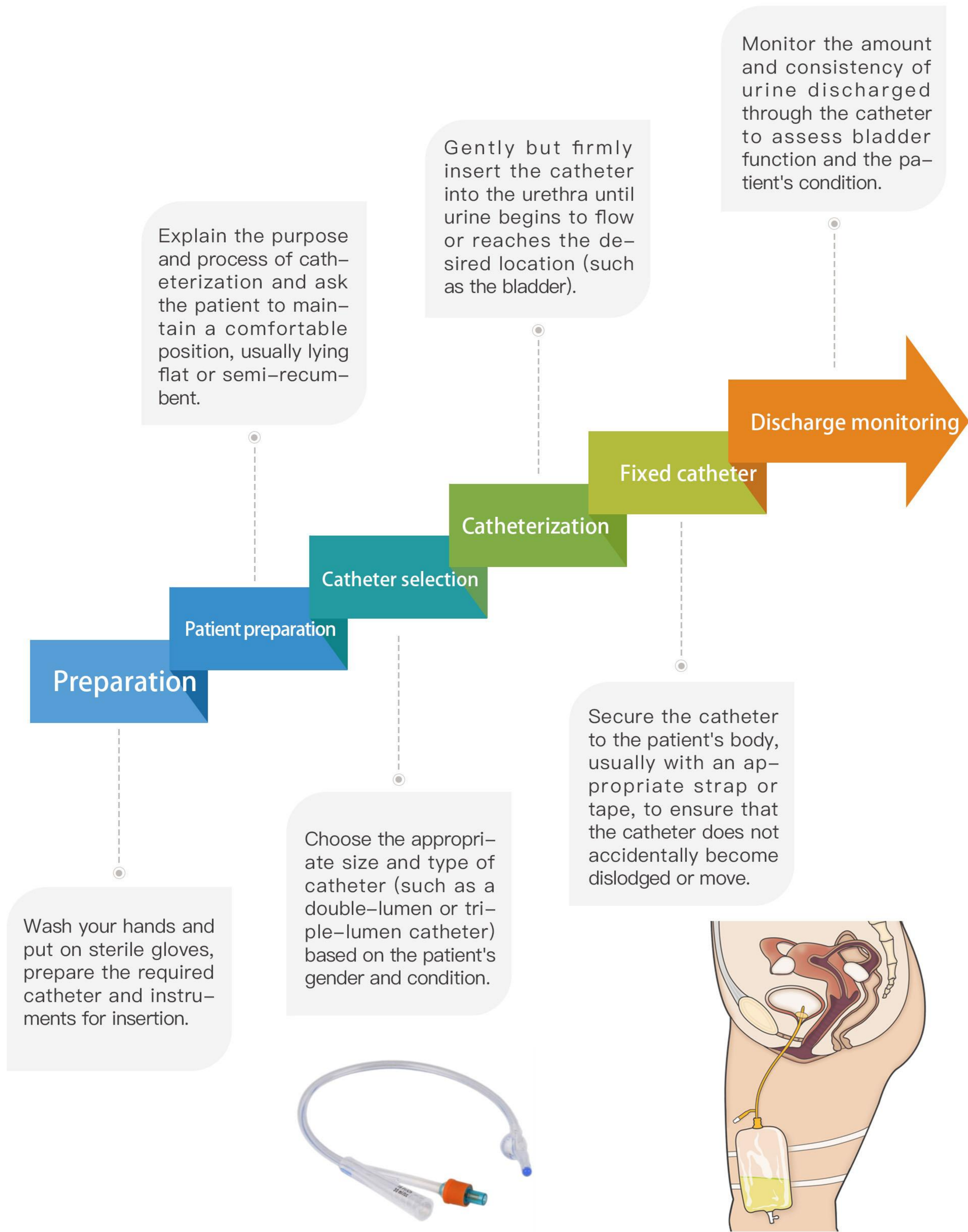


■ Features and Benefits

- Made of medical grade and high quality silicone material.
- Safer and more durable for longer retention: coating remains in good condition after 28 days of retention.
- Compared with ordinary silicone catheters, hydrophilic coated silicone catheters become very slippery when in contact with water. The hydrophilic coating forms a lubricating film between the catheter surface and the delicate urethral tissue, which significantly reduces friction and irritation that may lead to infection.
- Reduces adhesion of pathogens of urinary tract infection.



OPERATING PROCEDURES



WE CARE, WE CAN

Suzhou Shenyun Medical Equipment Co., Ltd.
Add:No. 666, Yinzang Road, Linhu Town,, Suzhou City 215104, China
P: + 86 182 2153 2164 | E: Jolin@symedical.com.cn
www.shenyunmedical.com



Jack Liu



@shenyun_medical



@shenyun_medical Suzhou Shenyun Medical Equipment Co., Ltd.



SHENYUN MEDICAL